

# TPPRO

## System Manual

### **Risk warning**

Before you begin trading on Real account please carefully consider your investment goals, risk and experience you have. It should be noted that Forex is a leverage based market. It should be remembered that leverage can work both in your advantage and disadvantage as well. Therefore there is high risk of losing a part or all of your financial input placed on your account and because of that you should remember to trade with the amount of money which you can lose without taking any influential financial damage.

### **Disclaimer**

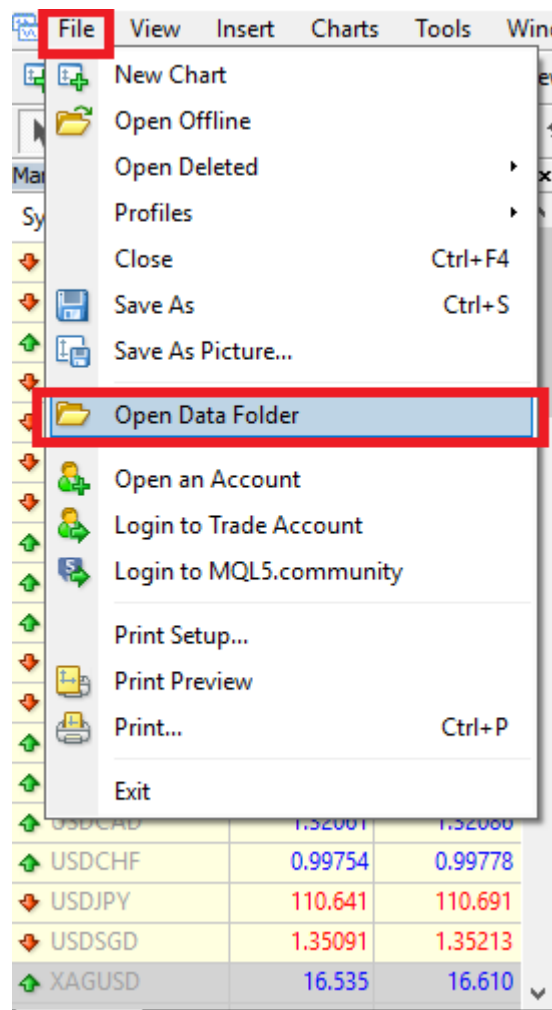
Signals generated by the system are not investment recommendations. All materials included on the website, as well as all system components (indicators, instruction manual) are for educational purposes only. Creators of the system will not take any responsibility for any profit or loss/damage caused by using the system.

### **Copyright © 2025 All rights reserved.**

Unless otherwise indicated, all materials on these pages are copyrighted. All rights reserved. No part of these pages, either text or image may be used for any purpose other than personal use. Therefore, reproduction, modification, in any form or by any means, electronic, or otherwise, for reasons other than personal use, is strictly prohibited without prior written permission.

# 1. Installation proces.

- Open your MT4
- Click 'File/Open Data Folder' from the top tab.



- Copy templates files to the 'Templates' folder.

config	15.06.2018 14:09
history	08.05.2018 16:03
logs	16.06.2018 09:40
MQL4	08.05.2018 16:01
profiles	13.06.2018 10:20
templates	15.06.2018 22:52
tester	13.06.2018 10:44
origin	08.05.2018 16:01

- Copy indicator files to the 'MQL4>Indicators' folder.

Experts	08.05.2018 16:02
Files	08.05.2018 16:01
Images	08.05.2018 16:01
Include	08.05.2018 16:01
Indicators	15.06.2018 22:29
Libraries	08.05.2018 16:02
Logs	16.06.2018 09:40
Presets	08.05.2018 16:01
Projects	08.05.2018 16:01
Scripts	08.05.2018 16:02

- Restart your MT4

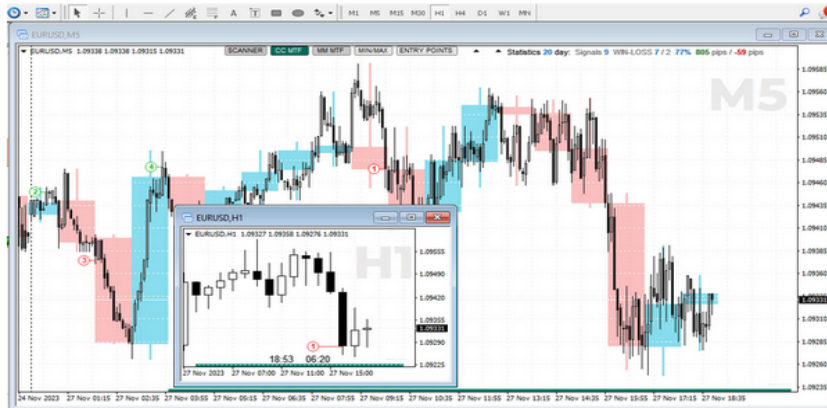
- Open your favourite chart. Press the right mouse button and pick TP PRO Entry template.



# INDICATOR PARAMETERS

**Color Candle (CC MTF) (Hot button) / Visual display of candles from a higher timeframe**

- **Candle (MTF)** - Choose a timeframe for candlestick display
- **Candle color sell** - The color of the candle for 'sell' (downward movement)
- **Candle color buy** - The color of the candle for 'buy' (upward movement)
- **History Bars** - The number of bars for analysis



**MIN/MAX (MM MTF) Hot button / Display of highs and lows (MIN/MAX) of the higher timeframe correction + indication of trend reversal points**

- **Timeframe (MTF)** - Select the timeframe for displaying MIN/MAX
- **Color SELL** - The color of MIN/MAX in a downward trend (sell)
- **Color BUY** - The color of MIN/MAX in an upward trend (buy)
- **History Bars** - The number of bars for analysis



---

**ENTRY POINTS (color candle) Hot button / Display of entry points**

- **Candle color buy (down)** - The fill color of the bearish candle at the buy entry point.
- **Candle color buy (UP)** - The outline color of the bullish candle at the buy entry point.
- **Candle color sell (down)** - The fill color of the bearish candle at the sell entry point.
- **Candle color sell (UP)** - The outline color of the bullish candle at the sell entry point.
- **ENTRY POINTS 1.1 (pips)** - The maximum number of pips for entry point 1.1
- **Show signal for only last swaps** - Show entry points only based on the last change.
- **Show alert + notification** - Enable/disable sound alerts and notifications on the phone.
- **Show TP** - The number of changes to display minimum take-profit levels.
- **Statistics, days** - The number of days for statistics.



**MIN/MAX Current Timeframe (Hot button)** / Display of highs and lows (MIN/MAX) on the current timeframe.

- **Color MIN** - The color for MIN on the current chart.
- **Color MAX** - The color of MAX on the current chart.
- **Show trend line** - Select a timeframe for the trend line.
- **Show trend swaps** - Display trend/structure changes.
- **Sound alert to change the trend** - Enable sound alert.
- **Name Sound** - Select a name for the sound alert.



---

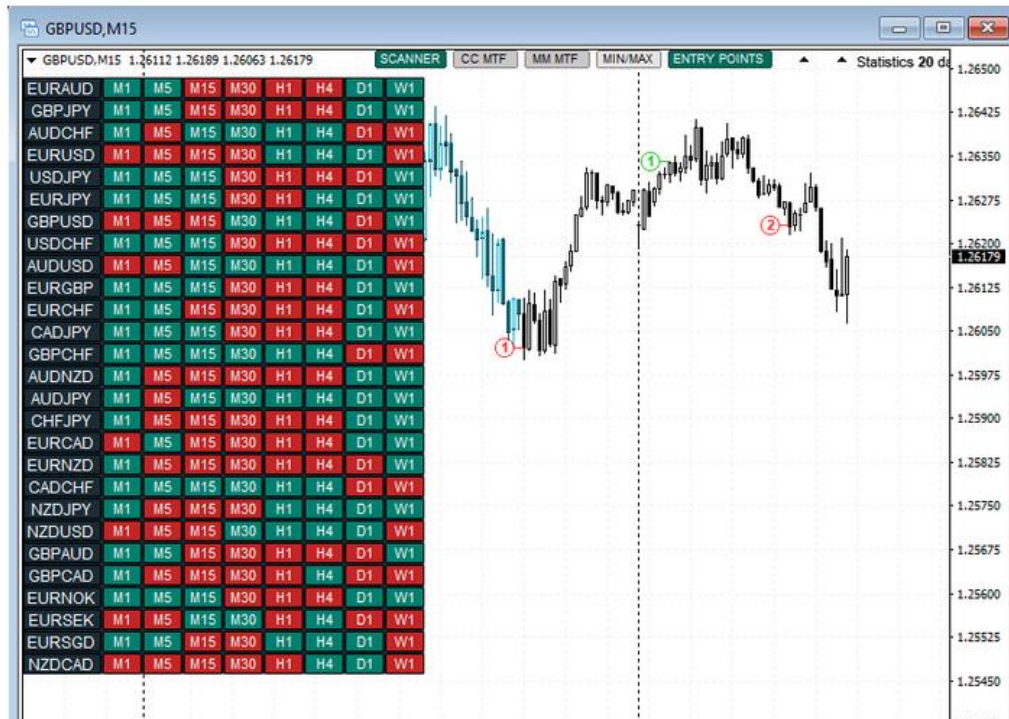
#### Rectangles ST-TP / Displaying rectangles for stop-loss and take-profit

- **Rect Stoploss (%)** - Percentage of retracement zone (recommended values  $\leq 50\%$ ).
- **Rect Takeprofit (RR)** - Coefficient for the take-profit zone (multiplied by Rect Stoploss).
- **Buy Rect SL** - Color of the retracement zone for BUY signals.
- **Buy Rect TP** - Color of the take-profit zone for BUY signals.
- **Sell Rect SL** - Color of the retracement zone for SELL signals.
- **Sell Rect TP** - Color of the take-profit zone for SELL signals.
- **No Trade** - Color of the completed zone.
- **Show Alert** - Enable/disable alert when the retracement zone is touched (start of entry point search).
- **Only Last Signal** - Display retracement and take-profit zones only for the last signal.
- **Display Rectangles ST-TP** - Enable/disable display of retracement and take-profit zones.



### TREND SCANNER (Hot button)

- **Use timeframes** - Select the required timeframes for display by the scanner.
- **Only current pair** - Enable/disable scanning only the current instrument.
- **List pairs** - Number of instruments to display.
- **Alert + notification** - Enable/disable alerts and notifications when all timeframes match the same timeframe.





---

### Trading TIME

- **Start hour** - Start of trading time (hours)
- **Start minute** - Start of trading time (minutes)
- **End hour** - End of trading time (hours)
- **End minute** - End of trading time (minutes)

